



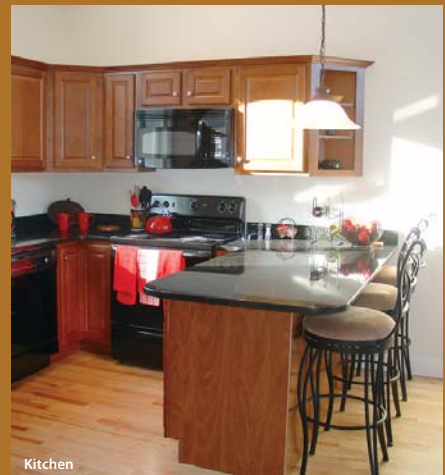
Living Room

Waterville Birches

Cobb Hill Construction is proud to have helped build one of New England's most inviting destination communities. Located just north of scenic Lake Winnepesaukee, Waterville Birches sits on a gentle slope in Thornton that offers beautiful views of Mt. Tecumseh, Welch & Dickey, and Sandwich Dome. Waterville Birches offers the perfect environment for year-round living and second homes. These town homes feature state-of-the-art kitchens with granite counter tops and Energy Star appliances, big windows that provide gorgeous natural

vistas, and spacious living spaces within their 2100 sq. ft. floor plans.

The town homes demonstrate a commitment to quality and an eye for detail with beautiful cabinetry and stunning hardwood flooring. Large loft areas, carefully designed to maximize livability, offer roomy spaces from which to enjoy Waterville Birches' scenic vistas. By combining attractive gable styling, spacious wooden decks and open living spaces, Cobb Hill has created the perfect environment to enjoy New Hampshire's scenic beauty and rugged landscapes.



Kitchen



Great Room



Exterior

PROJECT

Waterville Birches

LOCATION

Thornton, New Hampshire

FEATURES

2100 sq. ft., Energy Star Appliances, Granite countertops, Hardwood Flooring, Loft Areas, and Large Decks

